



Welcome Back

- Parent Information Meeting – March 25th, 2021
- Molly Bissell - Principal



Hybrid Cohort A - 116

Hybrid Cohort B = 114

How many students
are returning to
hybrid?

Virtual Cohort C- 112

Total Students - 342

Class sizes range from 2 students to 13 students in a cohort.

- High-touch areas are cleaned throughout the day
- The building is cleaned every night. Once a room is cleaned no one is allowed in until the next morning.
- Teachers are providing time for handwashing.
- Teachers have hand sanitizer
- Teachers have a BCPS approved bottle of germicidal disinfectant in their room to use.



Student Movement Throughout the Day

Kindergarten, 1st grade, 2nd grade and 3rd grade are all-self-contained classes for instruction. Students will go to special area's classrooms for specials.

Students may be pulled for small group instruction.

- *We can pull students from the same class (small number)*
- *We may not pull students from different classes*

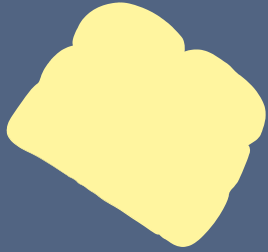
Students in 4th and 5th will stay in one classroom and their teachers will change classes. Students will go to the special area classrooms for specials.

Special education teachers, OT, PT and Social Emotional Learning teachers may be closer than 6 feet if hand over hand instruction or physical assistance is needed and has been identified in the student's IEP.



Students may pick up a breakfast on their way to class

- **Breakfast is free to all students this year.**

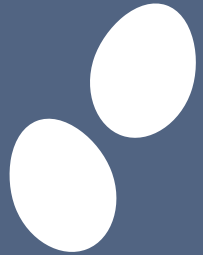


Students are encouraged to bring a snack and two bottles of water

- **If you are unable to provide a snack, please reach out and we can help.**

Students in grades 1st to 5th will eat in the cafeteria and kindergarten will eat in their rooms.

- **Lunch is free to all students this year.**



Breakfast, Lunch and Snack

Why does my child have “brunch” or “lupper”?

In order to clean the tables and the chairs between lunches, additional time had to be included in the schedule which elongated the lunch window.

Students must be six feet apart in the cafeteria

Students must all be facing the same direction

Students will remove their mask to eat

Students may have conversations with other students in the cafeteria

Students may bring items from home to play with at lunch



Technology – What do I do if I have a problem?



Individual Problem

- Check and make sure the icon in the upper right-hand corner is your students BCPS google account and not a personal gmail account.
- Enter a technology ticket for help located on BCPS.org
 - Answer your phone because it will be a random google number that calls you to discuss/fix the problem.

School or County Problem

- Complete any work the teacher has assigned
- Work in First in Math or RAZ Kids website
- Read a good book
- Encourage offline play

We will post on the following social media sites for further clarification and instruction as soon as we can. We will send out a phone message if we are able.

Twitter [@mollybissell](#)

PTA Facebook - [Lutherville Lab PTA](#)

Lutherville Facebook - [Lutherville Lab ES](#)

My child
wants to see
Mr. Bruns in
person for
PE but, PE is
virtual for his
cohort.



Transportation

There is a new car-rider procedure in place this year

Car Loop – enters driveway next to the Mazda dealership



Bus Loop – enters driveway at the light



York Road



Entry

Entry

Lutherville Laboratory School

Car Rider Entry

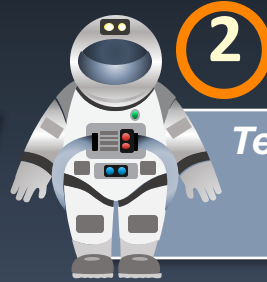
Parking Lot



Recess Information



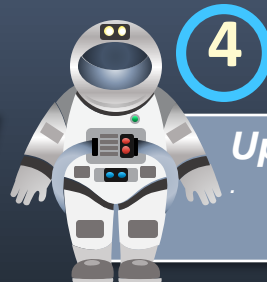
Basketball Courts



Tennis Courts



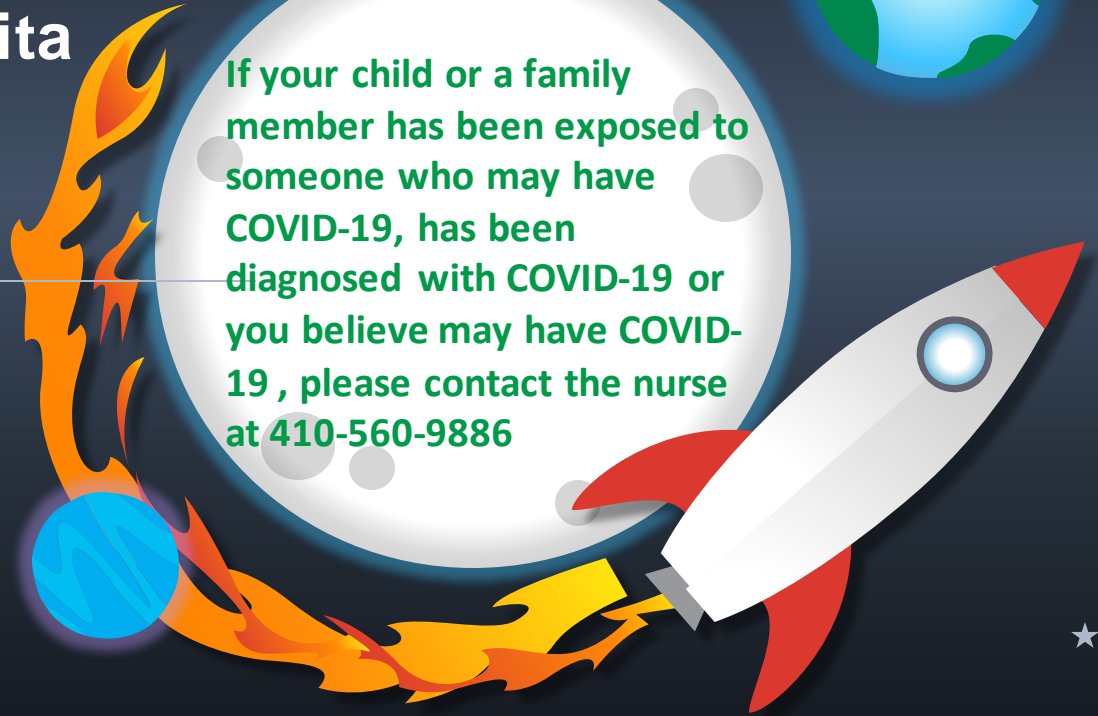
Lower Field:



Upper Field

Notes from Nurse Vita

If your child or a family member has been exposed to someone who may have COVID-19, has been diagnosed with COVID-19 or you believe may have COVID-19, please contact the nurse at 410-560-9886

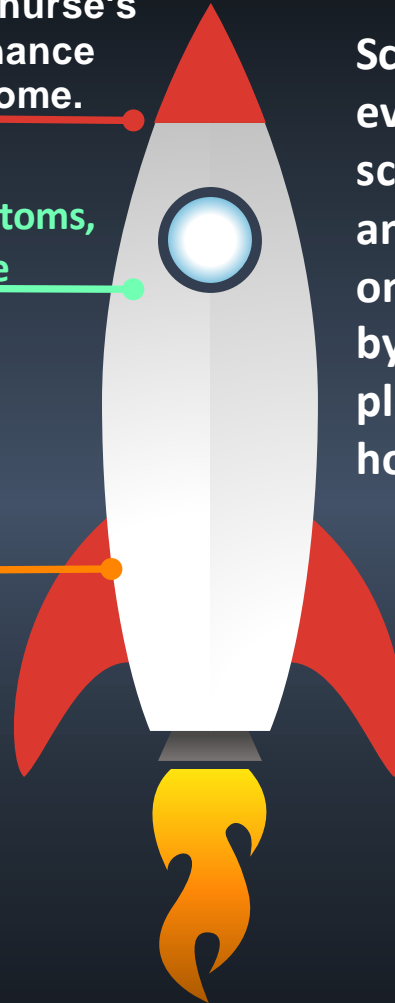


1 If the student visits the nurse's office, there is a 99% chance they they will be sent home.

2 If a child visits nurse with 2 or more symptoms, they are considered to have COVID-19 like illness and will wait in the privacy suite monitored by the nurse.

3 If your child receives daily medication the nurse will be visiting the classroom to administer it.

Screen you child every day prior to school. If they have any of the symptoms on the list provided by Health Services, please keep them home.



Can My Child Go to School Today?

Answer the following three questions.

1. Do you believe your child may have been in contact with another person who tested positive for COVID-19?

YES

Stay at home. Inform the school.

Call your child's health care provider.

Student must stay home 10 days from last date of contact with positive individual even if student has a negative test.

NO

2. Is your child ill with cold/flu-like symptoms? (*temperature of 100 degrees or higher, sore throat, congestion, runny nose, cough/shortness of breath/difficulty breathing, new loss of taste or smell, nausea, vomiting or diarrhea, muscle or body aches, fatigue, extreme tiredness, headache*)

YES

Stay at home. Inform the school.

Rest and Recover.

Call health care provider.

NO

3. Has your child been tested for COVID-19 and waiting for results?

YES

Stay at home until results are received.

Inform the school.

**NEGATIVE
COVID TEST OR
OTHER
DIAGNOSIS**

Return to school if fever free for 24 hours and not been told to stay home due to contact with another person who has tested positive.

Give return to school note/test results from the health care provider to nurse.

NO

Come to school.

If your child has not been absent for illness, they may go directly to class.

POSITIVE COVID TEST

Stay at home for at least 10 days from when symptoms began.
Return to school only with health care provider note and when:

- Child is fever free for 24 hours without the use of medication,
- AND symptoms have improved,
- AND it has been at least 10 days since symptoms first appeared.

If the child never had symptoms, then return 10 days after the date of the positive test.

POSITIVE COVID TEST



Questions?
More Information?